



Commercial Energy Saver Gas Electronic Ignition

Features:



Bradford White is ISO registered to the 9001 standard.

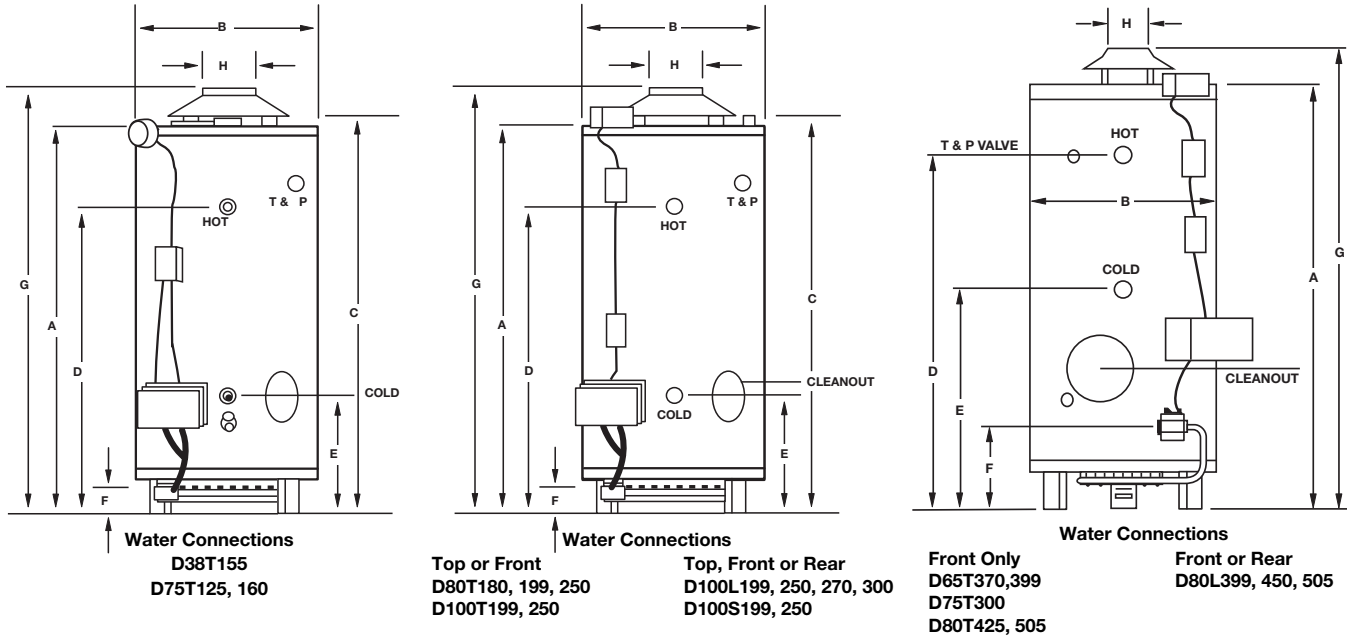
- **Non-CFC foam insulation.**
- **Vitraglas® lined tank**—Bradford White water heater tanks are protected from the corrosive effects of hot water by an exclusive ceramic porcelain-like coating. The Bradford White high silica Vitraglas® lining provides a tough interior surface for water heater tanks, which must withstand the wearing effects of high volume and high temperature hot water.
- **Factory installed Hydrojet® Sediment Reduction System**—cold inlet sediment reduction device made of stainless steel for increased durability. Helps prevent sediment build up in tank.
- **Flue damper**—automatic flue damper reduces stand-by loss, saving money and fuel.
- **Electronic ignition**—pilot does not burn while water heater is in standby mode. (115V AC required to heater). Ignition system operates off of 24 volts.
- **Magnesium anode rods**—employed to provide an extra measure of corrosion prevention for longer life.
- **Hand hole cleanout**—allows inspection of tank interior and facilitates removal of water heater's principal deterrent to long life—accumulated lime and sediment deposits.
- **Controls**—adjustable electronic thermostat to any temperature up to 180°F (82°C). A recycling Energy Cut-Off (E.C.O.) shuts off all gas in event of an overheat condition.
- **NSF construction available.**
- **Brass drain valve.**
- **T&P relief valve installed.**
- **ASME code available** on all models above 200,000 BTUH (58.6KW).
- **Three year limited warranty**—protects your investment in a quality glass lined water heater. If the tank leaks for reasons of faulty materials, workmanship, or corrosion within the warranty period, the water heater will be replaced with a comparable water heater of our manufacture. (Exclusive of all shipping and reinstallation costs.) See complete copy of the warranty included with the water heater.
- **One year limited parts warranty**—these quality components are manufactured for us by industry leaders and will be replaced in the event of failure during the parts warranty period (exclusive of shipping and reinstallation costs.)
- **Design certified by CSA International (formerly AGA/CGA).**
- **North Carolina Code Compliant.**

MANUFACTURED UNDER ONE OR MORE OF THE FOLLOWING U.S. PATENTS: 7,063,133 B2; 5,954,492; 5,954,492; 5,761,379; 5,943,984; 5,081,696; 5,988,117; 6,142,216; 5,199,385; 5,574,822; 5,372,185; 5,485,879; 5,277,171; (B1)5,341,770; 5,660,165; 5,596,952; 5,682,666; 4,904,428; 5,023,031; 5,000,893; 4,669,448; 4,829,983; 4,808,356; 5,115,767; 5,092,519; 5,052,346; 4,416,222; 4,628,184; 4,861,968; 4,672,919; Re. 34,534. OTHER U.S. AND FOREIGN PATENT APPLICATIONS PENDING. CURRENT CANADIAN PATENTS: 1,272,914; 1,280,043; 1,289,832; 2,045,862; 2,112,515; 2,108,186; 2,107,012; 2,092,105.5.



Dimensions

Commercial Energy Saver Gas Models— Electronic Ignition



All models are design certified by CSA International (formerly AGA and CGA) for up to 180°F (82°C) application as an Automatic Storage Heater, and an Automatic Circulating Tank Heater.

As an Automatic Storage Heater, all models are complete self-contained water heating systems. It needs no separate storage tank, pump, wiring or elaborate piping network. When equipped with a mixing valve, it will supply 180°F (82°C) sanitizing and 140°F (60°C) general purpose hot water simultaneously. These models can be used either as a single unit or in multiples connected in parallel.

Sample Specification

The water heater shall be a Bradford White model with a rated storage capacity of not less than _____ gallons (_____ liters), a minimum gas input of _____ BTUH/KW, and a minimum recovery of _____ GPH/LPH at 100°F (56°C) temperature rise. It shall be design certified by CSA International (formerly AGA and CGA for 180°F (82°C) application, either with or without a separate storage tank. The tank shall be lined with Vitraglas® vitreous enamel and shall have a bolted hand hole cleanout. The tank shall have _____ extruded magnesium anode rods installed in separate head couplings and extended to within three inches (76mm) of the bottom. The heater shall be insulated with a Non-CFC foam. This water heater shall be equipped with an ASME rated T&P relief valve, electronic ignition system (115V AC required) and flue damper. The entire installation shall be made in compliance with state and local codes and ordinances.

Dimensions and specifications subject to change without notice in accordance with our policy of continuous product improvement.

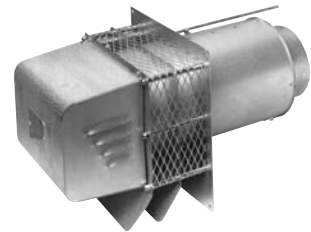
Commercial Energy Saver Gas Electronic Ignition Dimensions in Millimeters

ENERGY SAVER MODELS Includes installed T&P Valve and Flue Damper with Electronic Ignition.

| V | ● | ▲ | ★ | MODEL NUMBER | KW INPUT | 1ST HR. DEL. LTR. AT 56°C RISE | RECOVERY LPH AT DEGREE RISE | | | STORAGE LITERS | DIMENSIONS IN MILLIMETERS | | | | | | | | | | WEIGHT | | |
|---|---|---|---|----------------------|----------|--------------------------------|-----------------------------|------|------|----------------|---------------------------|--------|------------------|-----------------------|-----------------------|--------------------|----------------|-------------|------------------|-----------------|--------------------|--------------|---------------|
| | | | | | | | 22° | 56° | 78° | | A HT. | B DIA. | C TOP WTR. CONN. | D REAR/FRONT HW CONN. | E REAR/FRONT CW CONN. | F HT. TO GAS CONN. | G TOP VENT HT. | H VENT DIA. | WTR. CONN. DIA. | GAS CONN. DIA. | RELIEF VALVE OPEN. | STD WT. (KG) | ASME WT. (KG) |
| V | ● | ▲ | ★ | D-38T-155-3N | 45.4 | 659 | 1391 | 556 | 397 | 144 | 1092 | 718 | — | 883 | 492 | 117 | 1295 | 152 | 38 | 19 | 19 | 199 | — |
| V | ● | ▲ | ★ | D-75T-125-3N | 36.6 | 659 | 1147 | 458 | 326 | 284 | 1651 | 718 | 1705 | 1384 | 864 | 121 | 1835 | 127 | 38 | 19 | 19 | 236 | — |
| V | ● | ▲ | ★ | D-75T-160-3N(LP) | 46.8 | 772 | 1431 | 572 | 409 | 284 | 1651 | 718 | 1705 | 1384 | 864 | 121 | 1835 | 152 | 38 | 19 | 19 | 236 | — |
| V | ● | ▲ | ★ | D-80T-180-3N | 52.7 | 874 | 1650 | 662 | 469 | 303 | 1638 | 718 | 1683 | 1422 | 495 | 121 | 1838 | 152 | 38 | 19 | 19 | 245 | — |
| V | ● | ▲ | ★ | D-80T-199-3N(LP) | 58.6 | 946 | 1836 | 734 | 526 | 303 | 1638 | 718 | 1683 | 1422 | 495 | 121 | 1838 | 152 | 38 | 19 | 19 | 245 | — |
| V | ● | ▲ | ★ | D-80T-250-3N(A)(LP) | 73.2 | 1128 | 2294 | 916 | 655 | 303 | 1638 | 718 | 1683 | 1422 | 495 | 121 | 1838 | 152 | 38 | 19 | 25 | 245 | 268 |
| V | ● | ▲ | ★ | D-100T-199-3N | 58.6 | 995 | 1836 | 734 | 526 | 371 | 1918 | 718 | 1962 | 1702 | 495 | 121 | 2118 | 152 | 38 | 19 | 19 | 277 | — |
| V | ● | ▲ | ★ | D-100T-250-3N(A)(LP) | 73.2 | 1177 | 2294 | 916 | 655 | 371 | 1918 | 718 | 1962 | 1702 | 495 | 121 | 2118 | 152 | 38 | 19 | 25 | 277 | 313 |
| V | ● | ▲ | ★ | D-75T-300-3N (A) | 87.9 | 1302 | 2752 | 1101 | 787 | 284 | 1638 | 718 | — | 1378 | 737 | 267 | 1851 | 178 | 38 | 19 | 25 | 268 | 293 |
| V | ● | ▲ | ★ | D-65T-370-3N (A) | 108.4 | 1533 | 3395 | 1359 | 969 | 246 | 1638 | 718 | — | 1378 | 737 | 267 | 1864 | 203 | 38 | 25(N) 19(LP) | 25 | 302 | 327 |
| V | ● | ▲ | ★ | D-65T-399-3N (A) * | 117.2 | 1605 | 3671 | 1469 | 1048 | 246 | 1638 | 718 | — | 1378 | 737 | 267 | 1864 | 203 | 38 | 25 | 25 | 302 | 327 |
| V | ● | ▲ | ★ | D-80T-425-3N (A) | 124.5 | 1771 | 3899 | 1559 | 1113 | 303 | 1918 | 718 | — | 1632 | 737 | 267 | 2102 | 254 | 38 | 25(N) 19(LP) | 25 | 340 | 363 |
| V | ● | ▲ | ★ | D-80T-505-3N (A) | 148.0 | 1995 | 4459 | 1783 | 1276 | 303 | 1918 | 718 | — | 1632 | 737 | 267 | 2102 | 254 | 38 | 25(N) 19(LP) | 25 | 340 | 363 |
| V | ● | ▲ | ★ | D-80L-399-3N(A) (LP) | 117.2 | 1681 | 3671 | 1469 | 1048 | 303 | 1524 | 768 | — | 1308 | 597 | 267 | 1816 | 203 | 38(T&F) 51(R) | 25(N) 19(LP) | 25 | 363 | 379 |
| V | ● | ▲ | ★ | D-80L-450-3N(A) (LP) | 131.8 | 1862 | 4129 | 1650 | 1181 | 303 | 1524 | 768 | — | 1308 | 597 | 267 | 1762 | 254 | 38(T&F) 51(R) | 25(N) 19(LP) | 25 | 363 | 379 |
| V | ● | ▲ | ★ | D-80L-505-3N(A) (LP) | 148.0 | 2063 | 4633 | 1851 | 1325 | 303 | 1524 | 768 | — | 1308 | 597 | 267 | 1762 | 254 | 38(T&F) 51(R) | 25(N) 19(LP) | 25 | 363 | 379 |
| V | ● | ▲ | ★ | D-100L-199-3N | 58.6 | 999 | 1836 | 734 | 526 | 379 | 1651 | 768 | 1702 | 1435 | 597 | 114 | 1905 | 152 | 38(T&F) 51(R) | 19 | 19 | 329 | — |
| V | ● | ▲ | ★ | D-100L-250-3N(A) | 73.2 | 1181 | 2294 | 916 | 655 | 379 | 1651 | 768 | 1702 | 1435 | 597 | 114 | 1905 | 152 | 38(T&F) 51(R) | 19 | 25 | 329 | 347 |
| V | ● | ▲ | ★ | D-100L-270-3N(A) * | 79.0 | 1257 | 2479 | 992 | 708 | 379 | 1651 | 768 | 1702 | 1435 | 597 | 114 | 1905 | 152 | 38(T&F) 51(R) | 19 | 25 | 329 | 347 |
| V | ● | ▲ | ★ | D-100L-300-3N(A) | 87.9 | 1366 | 2752 | 1101 | 787 | 379 | 1651 | 768 | 1702 | 1435 | 597 | 114 | 1921 | 178 | 38(T&F) 51(R) | 19 | 25 | 329 | 347 |
| V | ● | ▲ | ★ | D-100S-199-3N(A) | 58.6 | 999 | 1836 | 734 | 526 | 379 | 1851 | 718 | 1905 | 1537 | 527 | 114 | 1949 | 152 | 38(T&F) 51(R) | 19 | 19 | 302 | — |
| V | ● | ▲ | ★ | D-100S-250-3N(A) | 73.2 | 1181 | 2294 | 916 | 655 | 379 | 1851 | 718 | 1905 | 1537 | 527 | 114 | 1949 | 152 | 38(T&F) 51(R) | 19 | 25 | 302 | 318 |

For LP models change suffix "N" to "X".
 V - 115V AC Required
 ● - Electronic Ignition
 ▲ - 80% Thermal Efficient
 ★ - Listed with California Energy Commission
 * - Available with Natural Gas Only
 (A) - ASME
 T - Top Water Connection
 R - Rear Water Connection
 F - Front Water Connection
 NSF Available

Energy Saver Series feature Hand Hole Cleanout on all models.
 Recoveries listed on rating plate are based on actual thermal efficiency.
 Recoveries and First Hour Delivery Rating are based on Thermal Efficiencies ranging up to 80%.
 150 PSI (1034 kPa) Working Pressure, 300 PSI (2068 kPa) Test Pressure.



Power Vent Kit available for above models.
 For more information please reference vent kit specification sheet.

For LowNOx compliance to meet SCAQMD requirements, place an "E" following the BTU Input identifier of the model number. Example: D-75T-125E-3N

These models meet or exceed the Thermal Efficiency and Standby Loss Requirements of ASHRAE 90.1b (current standard).

| (LP) Propane Gas Inputs | 1ST HR. DEL. LTR | RECOVERY LPH | | | |
|-------------------------|------------------|--------------|------|------|------|
| | | 56°C | 22°C | 56°C | 78°C |
| D-75T-160 | 45.4 KW/H | 753 | 1385 | 556 | 397 |
| D-80T-199 | 55.7 KW/H | 908 | 1745 | 696 | 500 |
| D-80T-250 | 68.9 KW/H | 1075 | 2157 | 863 | 616 |
| D-100T-250 | 68.9 KW/H | 1124 | 2157 | 863 | 616 |
| D-80L-399 | 109.9 KW/H | 1590 | 1147 | 1378 | 984 |
| D-80L-450 | 124.5 KW/H | 1771 | 3899 | 1559 | 1113 |
| D-80L-505 | 139.2 KW/H | 1957 | 4360 | 1745 | 1245 |



Ambler, PA

For U.S. and Canada field service, contact your professional installer or local Bradford White sales representative.

Sales 800-538-2931 • Fax 215-641-1670 / Technical Support 800-334-3393 • Fax 269-795-1089

Warranty 800-531-2111 • Fax 269-795-1089 / International: Telephone 215-641-9400 • Telefax 215-641-9750 / Fax on Demand 888-538-7833 / www.bradfordwhite.com

BRADFORD WHITE-CANADA INC. Sales/Technical Support 866-690-0961 / 905-238-0100 • Fax 905-238-0105 / www.bradfordwhitecanada.com

**Count On Bradford White
For Everything Hot Water**